

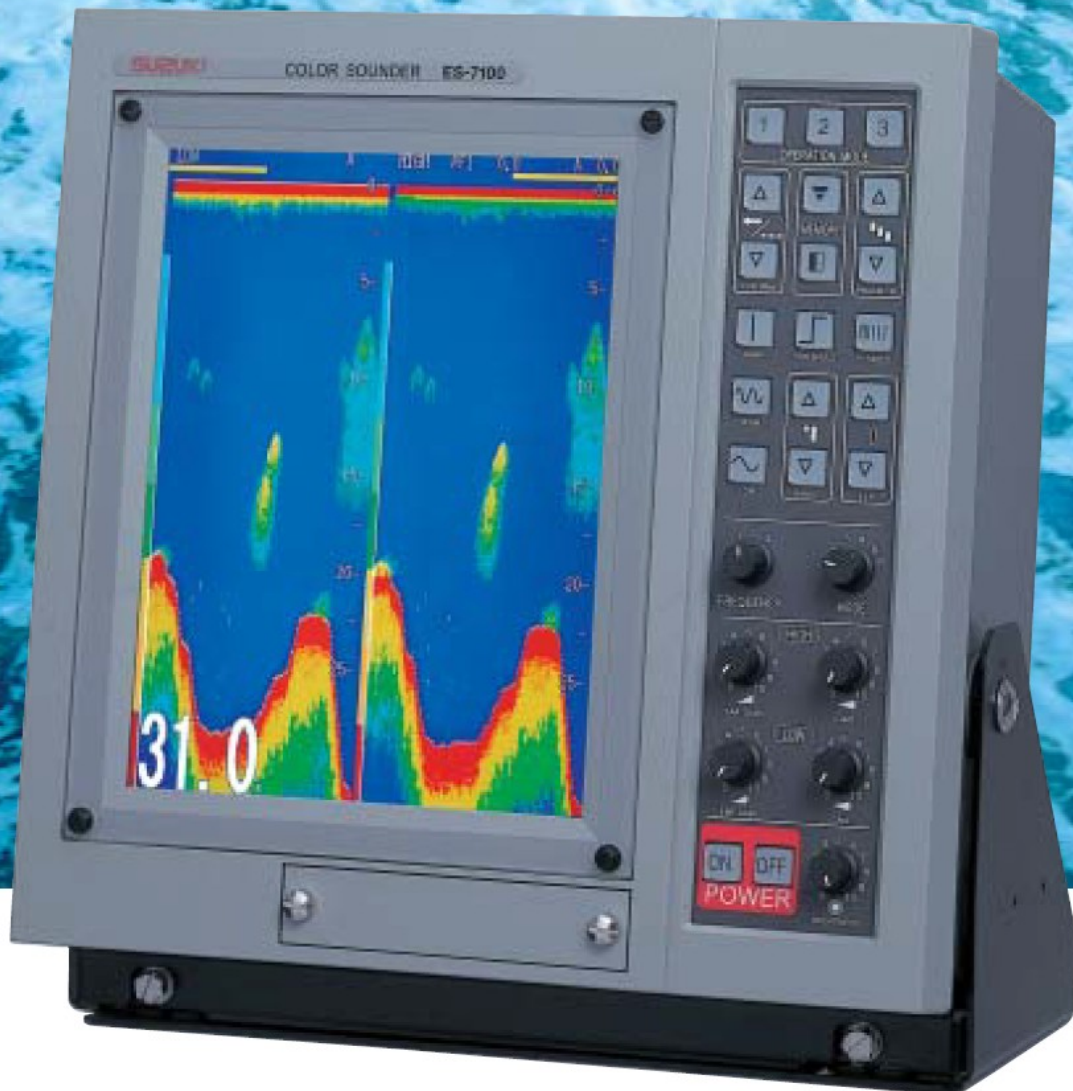
SUZUKI

Model COLOR LCD ECHO SOUNDER

ES-7100

10.4 INCH COLOR
TFT LCD

SUZUKI presents a new type of Echo Sounder, utilizing large flat screen TFT technology for improved presentation and easy operation.



SUZUKI FISH FINDER CO., LTD

FEATURES

10.4 inch TFT color LCD monitor

High-definition LCD for optimum viewability in direct sunlight

A broad variety of presentation by D range

D range will give you the best setting for various fishing operation in each frequency, a high frequency and a low frequency.

Precise setting capability

Gain adjustment, TVG curve, Signal repetition rate, pulse width and other characteristics, may be adjusted to meet users requirements.

Operation Mode

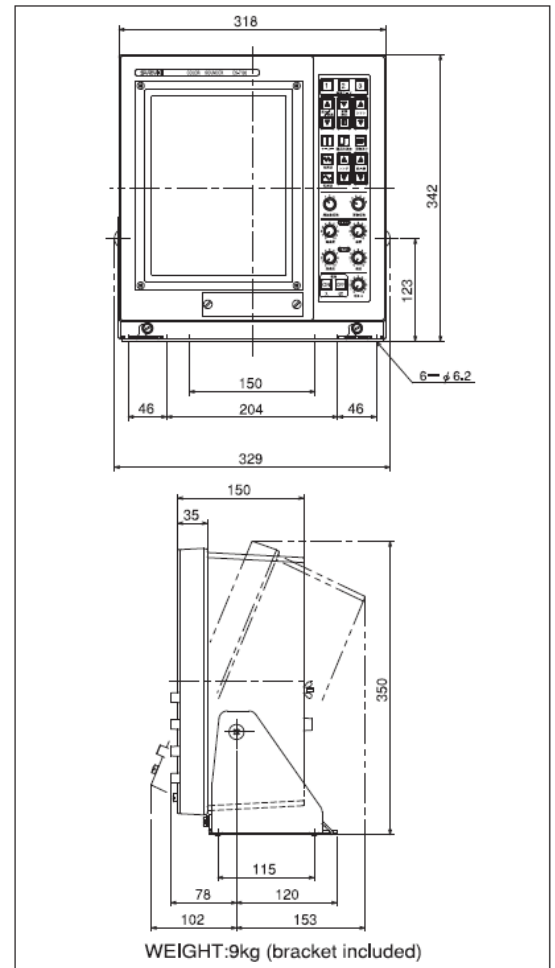
Three kinds of user-defined settings available.

Easy setup of menu while watching data

Menu may be adjusted while watching data on the same screen

Selection of Bottom Expansion Modes

Four different bottom expansion modes are available for enhancing target just above the sea bottom and ground discrimination.



SPECIFICATIONS

■ BASIC RANGE	FREE RANGE (7 KINDS OF RANGE SETTINGS UP TO 3000m, br. fm, or 6000ft)
■ SHIFT	UP TO 999m, br. fm or 2999ft.
■ PART EXPANSION	FREE RANGE (7 KINDS OF RANGE SETTINGS UP TO 250M)
■ FREQUENCIES	20, 24, 28, 38, 40, 45, 50, 60, 68, 75, 80, 150, 200kHz
■ DISPLAY MODE	①SINGLE LOW FREQUENCY ②SINGLE HIGH FREQUENCY ③DUAL FREQUENCY (HISTORICAL or HORIZONTAL) ④BOTTOM EXPANSION/NORMAL MODE DUAL DISPLAY ⑤PARTIAL EXPANSION/NORMAL MODE DUAL DISPLAY ⑥NAVIGATION MODE/SOUNDER ⑦MENU 1(RANGE) ⑧MENU 2(FUNCTIONS) ⑨COLOR PALETTE SET MENU
■ DIGITAL DISPLAY	①DEPTH ②DEPTH SCALE ③SHIFT ④EXPANSION START/VRM ⑤TIMER ⑥TEMP. TEMP GRAPH * ⑦LAT/LON * ⑧SPEED * ⑨COURSE *
■ OTHER FUNCTIONS	OPERATION MODE, A-SCOPE, FAR GAIN CONTROL, GAIN CONTROL, TVG CURVE, D RANGE, TRANSMIT. INTERVAL CHANGE, PULSE WIDTH CHANGE (AUTO, MANUAL), COLOR SELECTION, INTERFERENCE REDUCTION, NOISE REDUCTION, FISH ALARMS, CLUTTER CONTROL, THRESHOLD ADJUSTMENT, TEMP. ADJUSTMENT, WHITE LINE, SAVE DATA, OUTER RANGE DISPLAY, DRAFT ADJUSTMENT, TEMP. ALARMS. SCALE CHANGE, BRIGHTNESS CONTROL. PICTUER SPEED.
■ EXTERNAL INPUT	WATER TEMP. SENSOR (OP-102, OP-41, NMEA-0183 < MTW >) * , NAVIGATIONAL DATA (NMEA-0183) * , EXTERNAL SOUNDER *
■ EXTERNAL OUTPUT	DEPTH DATA (NMEA-0183) , WATER TEMP. DATA (NMEA-0183) , MARKER (TLL) * external navigational equipment is required.
■ SCREEN	10.4 INCH TFT COLOR LCD MONITOR, a resolution of 480×640 DOTS
■ POWER REQUIREMENT	DC10.5~40V Power consumption 30W

* optional equipment is required.

*Specifications are subject to change without notice.



For safe using, be sure to read the "Operation Manual" before using this model.

If you would like to know more about our products please contact...

SUZUKI FISH FINDER CO., LTD.

Head Office 12-1, Mamizuka-cho, Toyohashi-city, Aichi-pref,
441-8007 Japan
Phone(81)532-32-7511 Fax(81)532-32-7500
e-mail address: sales@suzukiff.co.jp
URL:http://www.suzukiff.co.jp/

© Colors used in this catalogue are subject to differ from actual colors.

