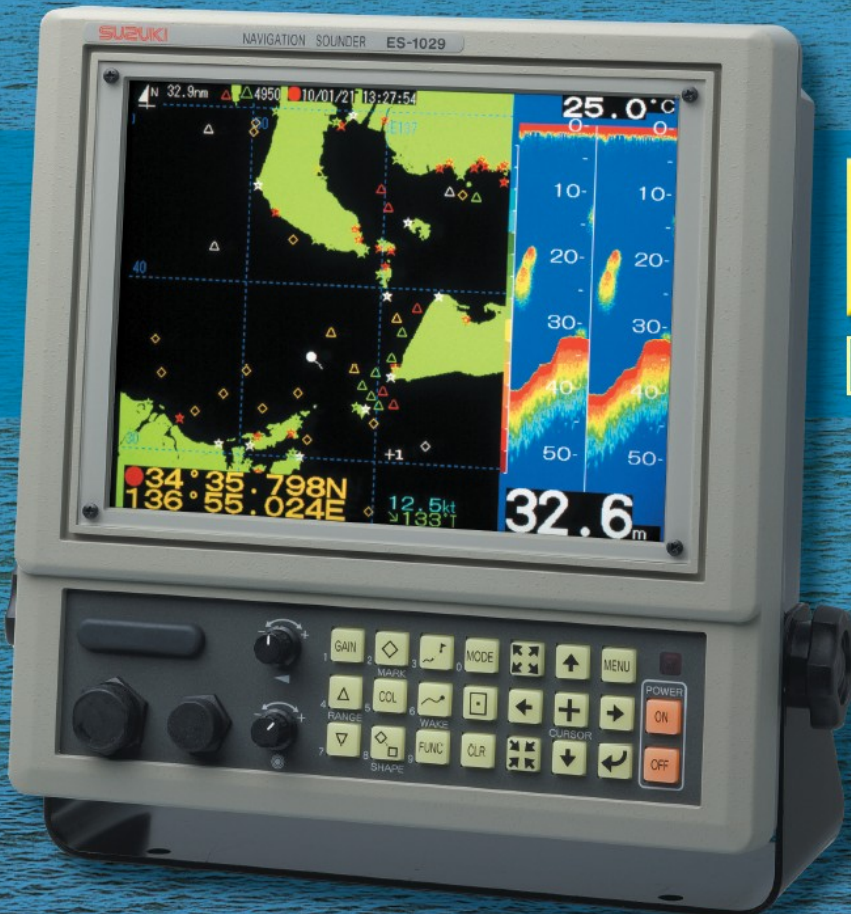


# ESG-129

10.4 inch color TFT LCD Navigator



# ES-1029

10.4 inch color TFT LCD Navigation Sounder

## SPECIFICATIONS

## ◆GPS RECEIVER

1. Frequency 1575.42 MHz ( C/A code )
2. Receiver type 18 Channels Parallel
3. Sensitivity Below - 130dBm
4. Accuracy Approx. 10m ( GPS : 2drms ), Approx. 8m ( DGPS : 2drms )

## ◆PLOTTER SECTION

Projection	Mercator projection
Latitude Limits	Between 85°N and 85°S
Map Scale (35°Latitude)	Scale : 1/700 ~ 1/8,600,000 Display width : 0.06 to 737nm ( ESG-129 ) 0.08 to 982nm ( ES-1029 )
Wake Display	Memory Capacity ( Total points ) : 16,000 points
Mark Display	Type : Waypoint, Mark and Chart ( 3 types ) Shape : 8 shapes in 3 sizes each Routes : 50 routes ( 20 waypoints per route ) Memory Capacity ( Max. ) : 30,000 points
Alarms	①Arrival ②Anchor Watch ③Track Error ④Border
Others	Course Up, Wake Memory, Wake Display, Display Bearing, Zoom In/Out, Cursor Change, Data correction, Remote controller*, USB memory* SD card*, Outer Buzzer*, Track Ball*

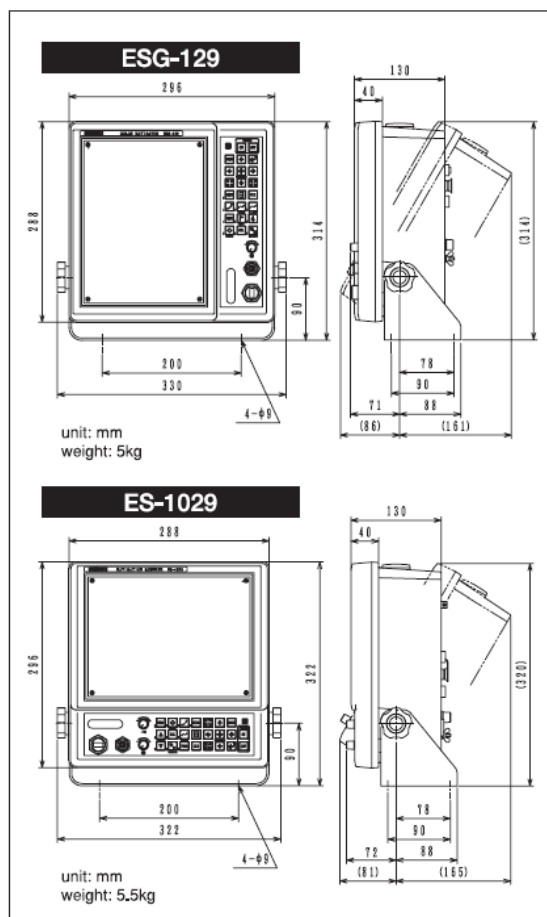
## ◆SOUNDER SECTION

Basic Ranges	0 ~ 5, 10 to 2000 [meter, fathom and braccia] 0 ~ 15, 20 to 5000 [feet]
Phased Range	Up to 999 meter, fathom and braccia Up to 2999 feet
Partial Expansion	Combination of Basic Range and Phased Range
Expansion Range	0 ~ 1, 2.5 to 250 [meters, fathoms and braccia] 0 ~ 10, 20 to 500 [feet]
Frequency	50kHz/200kHz
Presentation Modes	① Low Frequency Display ② High Frequency Display ③ Dual-Frequency Display ④ Bottom Expansion Display

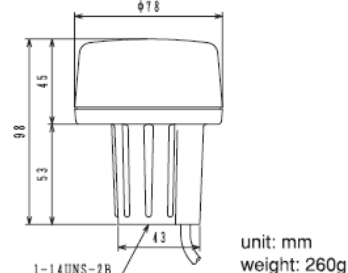
## ◆OTHERS

1. Inputs NMEA-0183 : Navigation data\*, Water temperature data\*,  
Water depth data\*, Buoy\*, ARPA radar\*, AIS\*,  
GPS compass\*
2. Outputs Water temperature sensor : OP-102\* or OP-41-1\*  
NMEA-0183 : Navigation data, Water temperature data, Depth data  
OTHERS : VGA output
3. Display Unit 10.4 inch color TFT LCD ( 480×640 pixels )  
8 colors ( ESG-129 )/8 colors or 16 colors ( ES-1029 )
4. Power Supply 10.5~30VDC, 25W ( ESG-129 ), 35W ( ES-1029 )

\* optional equipment is required.



## GP-6A



Design and specifications are subject to change without notice.



To ensure proper and safe use of the equipment, please carefully read and follow the safety information in the operation manual.

If you would like to know more about our products please contact...

## SUZUKI FISH FINDER CO., LTD.

12-1, Mamizuka-cho, Toyohashi-city, Aichi-pref, 441-8007 Japan  
 TEL(81)532-32-7511 FAX(81)532-32-7500  
 e-mail address : sales@suzukiff.co.jp  
 URL:http://www.suzukiff.co.jp/

©Colors printed on the catalog might differ from the actual colors.

Please contact: